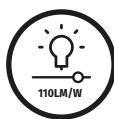
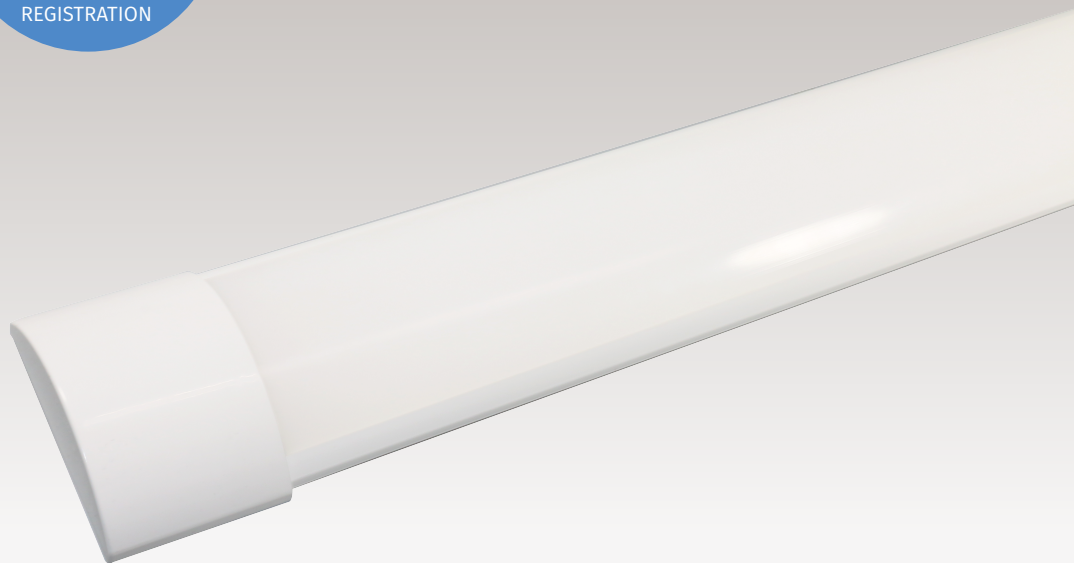


50W Slimline Batten LED Fitting

50W



FEATURES:

- Sleek, stylish appearance - no visible screws or fixings
- Excellent colour rendering (>Ra80)
- Direct AC power – ballast or starter are not required
- 3- Faster connector inside for easy installation

APPLICATIONS



COMMERCIAL



EDUCATION



HOME &
RESIDENTIAL



LOBBIES &
CORRIDORS



OFFICES



RETAIL

50W

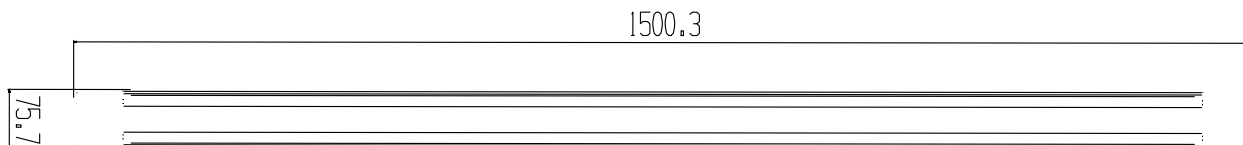
50W Slimline Batten

LED Fitting

Part No.

233879

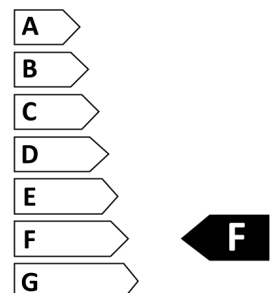
Description	5' 50w Twin Slimline LED Batten Fitting
Product Dimensions (mm)	75.5mm x 24.5mm x 1500mm
Product Weight (g)	380g
Power Consumption (w)	50w
Input Voltage (VAC)	220-240v
Colour Temperature (k)	4000K
CRI	>80
Lumen Output (lm)	5500lm
IP Rating	IP20
Beam Angle	110°
Construction	aluminum+PC
Working Temperature (°C)	-20° to +40°
Lifetime (hrs)	25,000
Switch Cycles	15,000 times
Lumen Efficacy (lm/w)	110lm/W
Cerification	CE / ROHS
Warranty	1 Year (+ 2 years extended warranty with online registration)



BRIGHT SOURCE



Bright Source
233879



50
kWh/1000h

