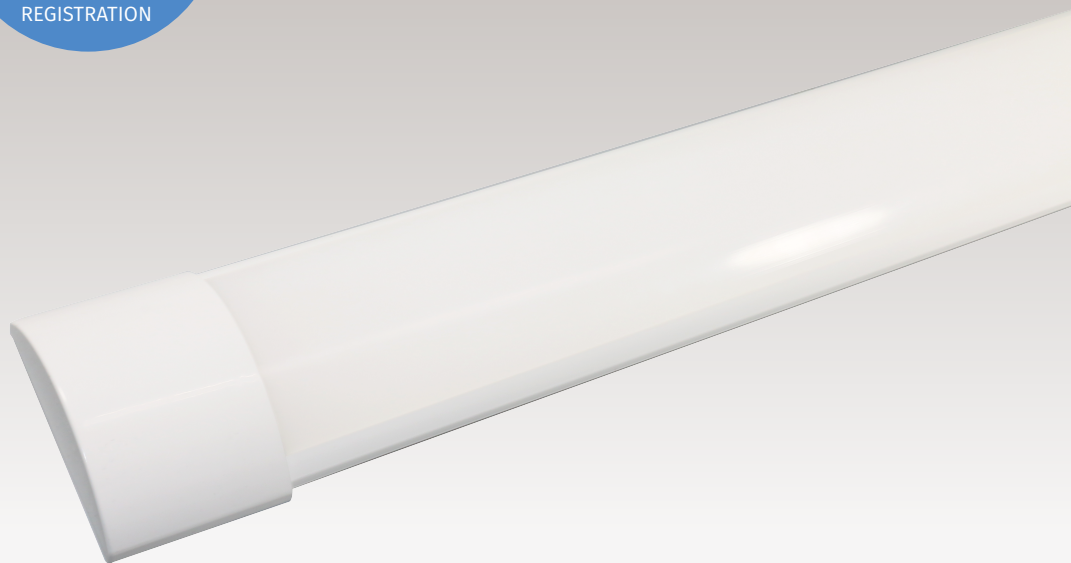


40W Slimline Batten LED Fitting

40W



FEATURES:

- Sleek, stylish appearance - no visible screws or fixings
- Excellent colour rendering (>Ra80)
- Direct AC power – ballast or starter are not required
- 3- Faster connector inside for easy installation

APPLICATIONS



COMMERCIAL



EDUCATION



HOME &
RESIDENTIAL



LOBBIES &
CORRIDORS



OFFICES



RETAIL

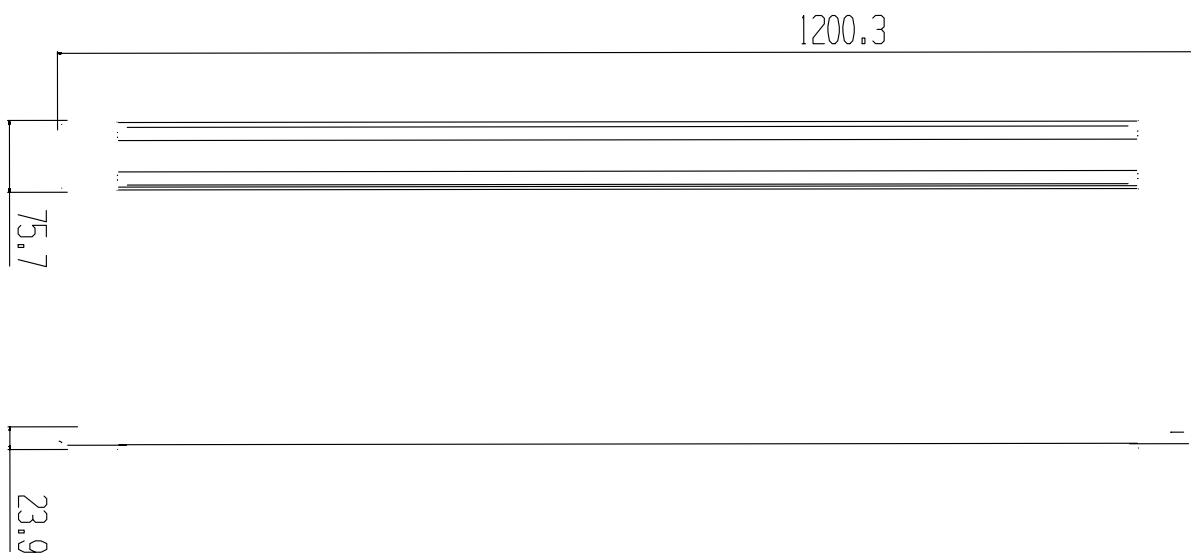
40W

40W Slimline Batten

LED Fitting

Part No.**233855**

| | |
|--------------------------|---|
| Description | 4' 40w Twin Slimline LED Batten Fitting |
| Product Dimensions (mm) | 75.5mm x 24.5mm x 1200mm |
| Product Weight (g) | 330g |
| Power Consumption (w) | 40w |
| Input Voltage (VAC) | 220-240v |
| Colour Temperature (k) | 4000K |
| CRI | >80 |
| Lumen Output (lm) | 4400lm |
| IP Rating | IP20 |
| Beam Angle | 110° |
| Construction | aluminum+PC |
| Working Temperature (°C) | -20° to +40° |
| Lifetime (hrs) | 25,000 |
| Switch Cycles | 15,000 times |
| Lumen Efficacy (lm/w) | 110lm/W |
| Cerification | CE / ROHS |
| Warranty | 1 Year (+ 2 years extended warranty with online registration) |



BRIGHT SOURCE

**Bright Source**
233855

A

B

C

D

E

F

G

F

40
kWh/1000h

2021 No. 1095